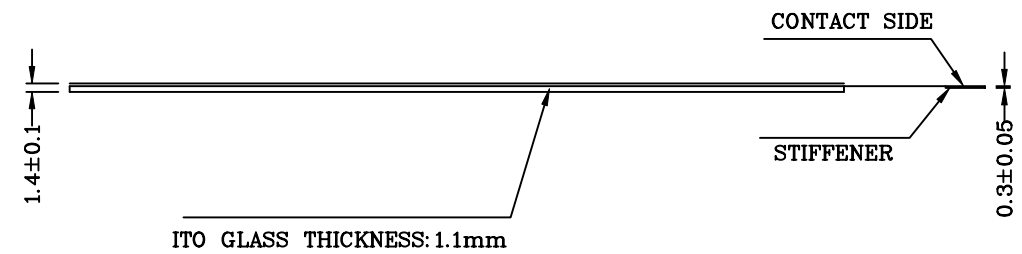
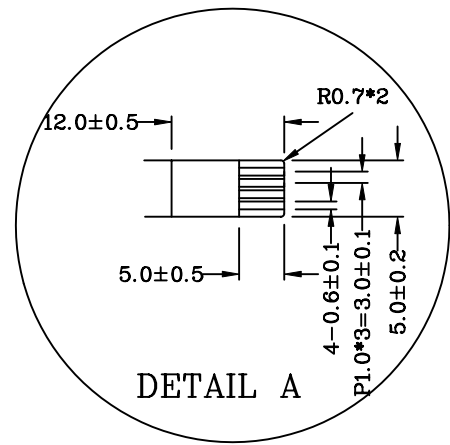


Pin #	Assignment
1	UP
2	RIGHT
3	DOWN
4	LEFT

SEE DETAIL "A"



- NOTES:
1. ITO GLASS THICKNESS : 1.10mm
 2. OVERALL THICKNESS : 1.40mm ±0.10
 3. CONNECTOR AND PINOUT AS INDICATED
 4. FRONT SURFACE : ANTIGLARE HARDCOAT
 5. OPTICAL SPECIFICATION : A001 UPDATED VERSION
 6. LAYER TO LAYER ASSEMBLY TOLERANCE: ±0.50mm

San Technology, Inc.			
NO. DATE		DESCRIPTION	
REVISION			
CHIEF OF DESIGN	APPROVED	TOLERANCES UNLESS SPECIFIED	
ENGINEER	PROJECT MANAGER	.X	± 0.50
DRAWN BY	DATE	.XX	± 0.50
SHT 1 OF 1	REV.	.XXX	± 0.10
		ANGULAR	.

PROJECT NAME: 9528
 DWG NO: 9528-0-01
 SCALE: 1:1 UNIT: mm